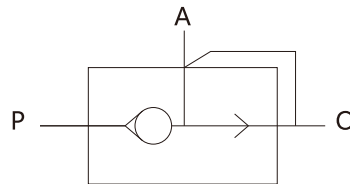
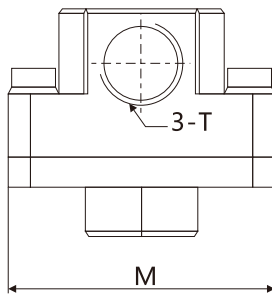
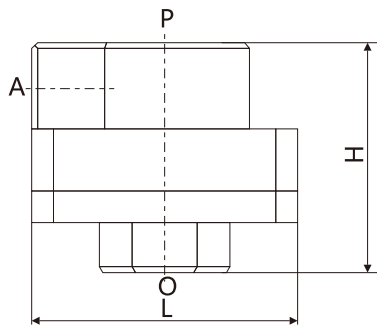


# 快速排氣閥KAQ系列 / Quick Exhaust Valve KAQ Series

## 外型尺寸圖 / Overall Dimension Drawing(mm)



- P- 進氣口(接換向閥輸出)  
P-In(Connect with change valve)
- A- 出氣孔(接氣缸)  
A-Out(Connect with cylinder)
- O- 排氣口(接消聲器)  
O-Out(Connect with muffler)

## 尺寸表/Dimension Sheet

流體 /Fluid		空氣 /Air	
保證耐壓力 /Ensured Pressure Resistance	KAQ2000-5000	15.3kgf/cm <sup>2</sup> (1.5Mpa)	
最高使用壓力 /Highest Working Pressure	KAQ2000-5000	10.2kgf/cm <sup>2</sup> (1.0Mpa)	
最低使用壓力 /Minmal Working Pressure	KAQ2000-5000	0.51kgf/cm <sup>2</sup> (0.05Mpa)	
環境及流體使用溫度 /Ambient and Fluid Temperature		5 ~ 60°C	